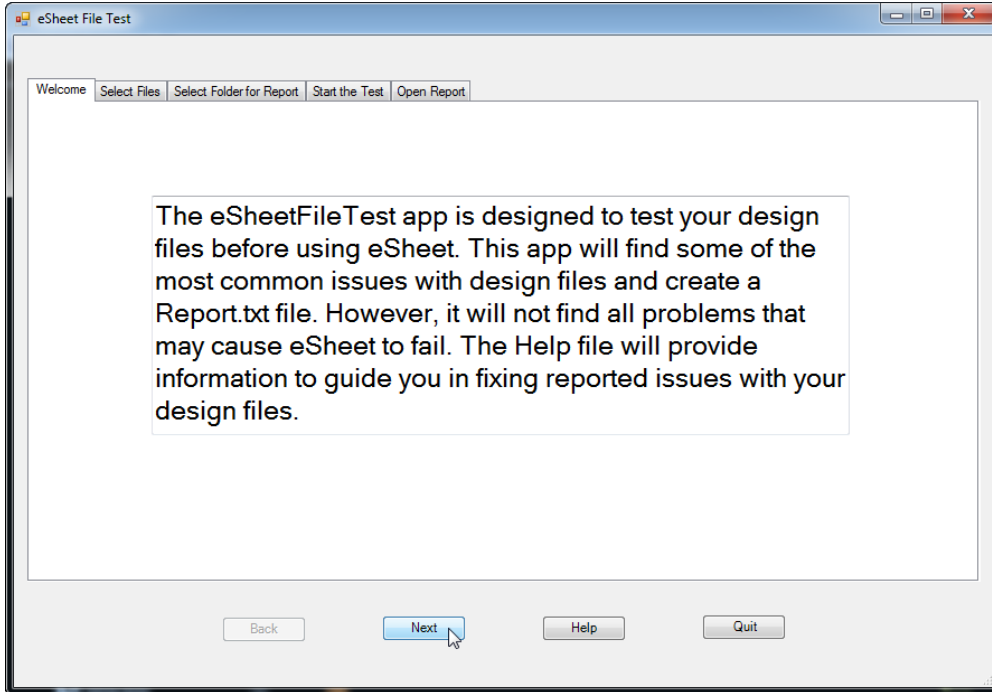


eSheetFileTest App

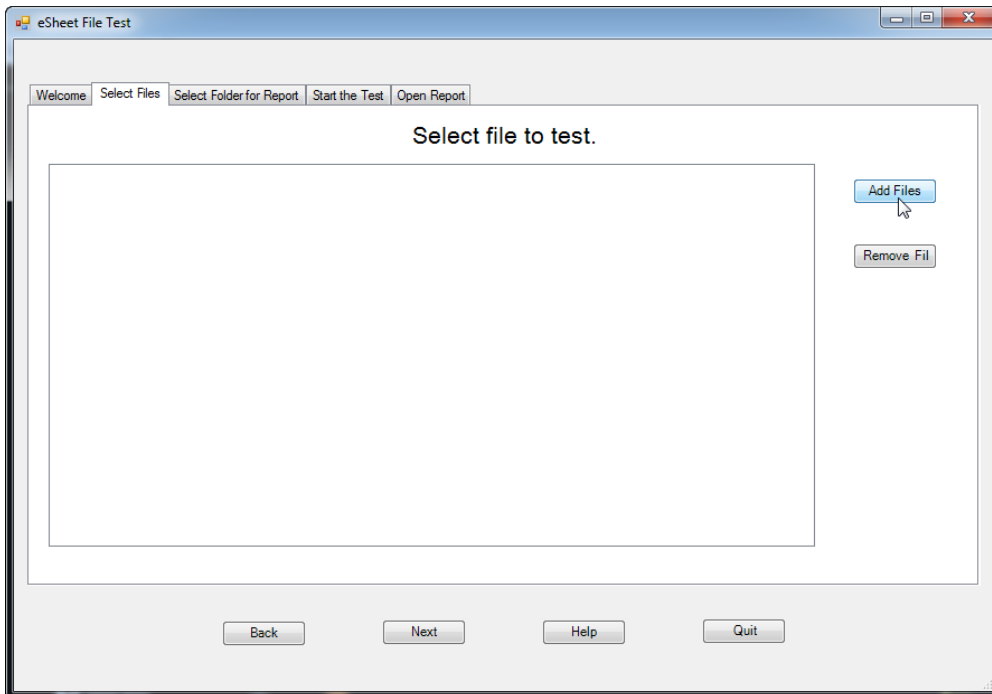
Table of Contents

Instructions	3
Design file repair instructions	8
"E-Sheet Name" enter-data field is blank.	8
No enter-data field for "E-Sheet Name."	9
"Sheet Description" enter data fields are blank.	11
Some or all of the "Sheet Description" enter data field are missing.	12
There are too many "Sheet Description" enter data fields.	12
Does not contain a sheet cell or the sheet cell has been dropped.	13
Has 1 or more raster file attachments.	14
Nested cell.	15

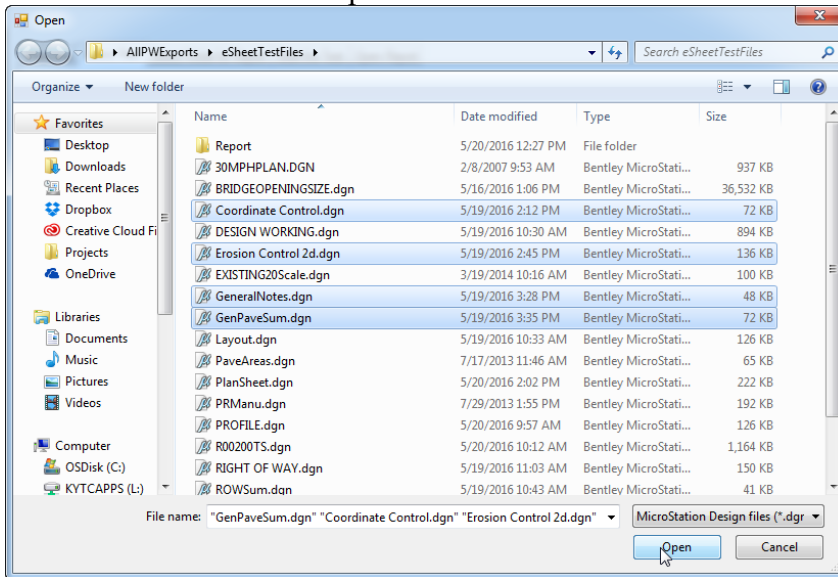
1. If using ProjectWise, export your files just like you would for eSheet.
2. Click Next.



3. Click Add Files.

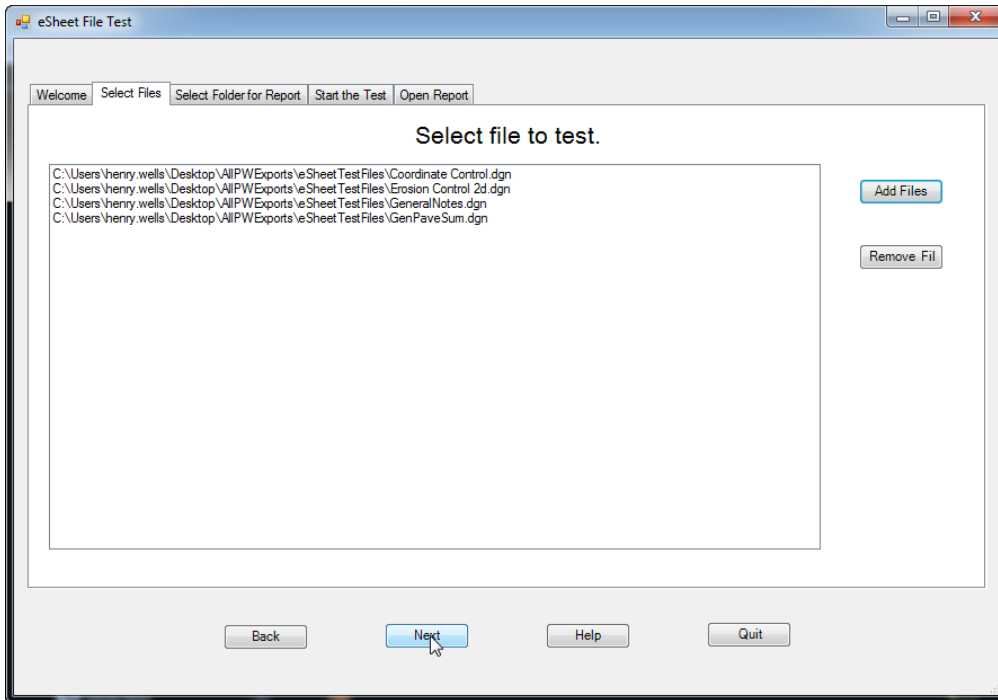


4. Select the files and click Open.

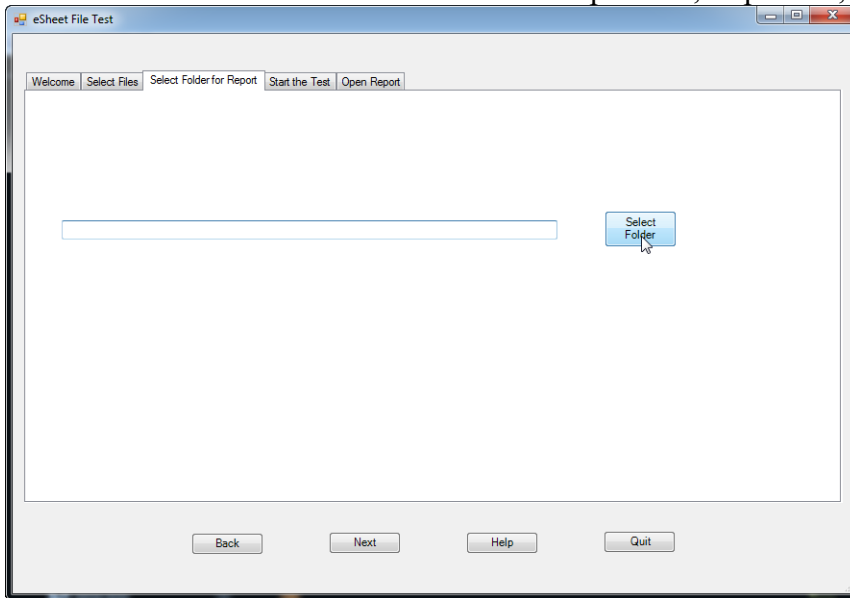


If you need to you can do this multiple times. Also, if you add a file that you don't want checked. You can select it and click Remove File.

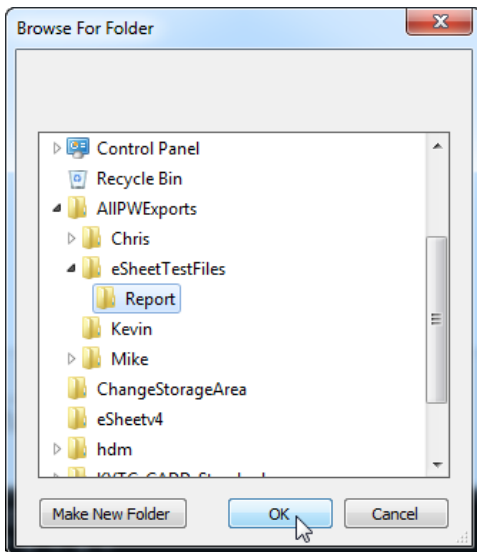
5. Click Next.



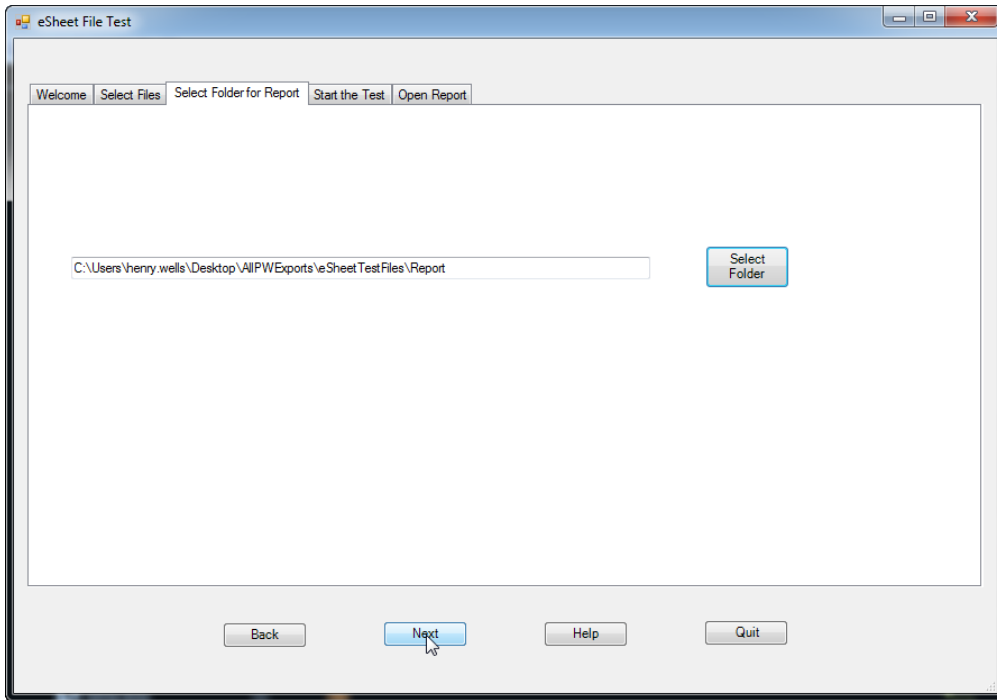
6. Click Select Folder. This is where the error report file, Report.txt, will be saved.



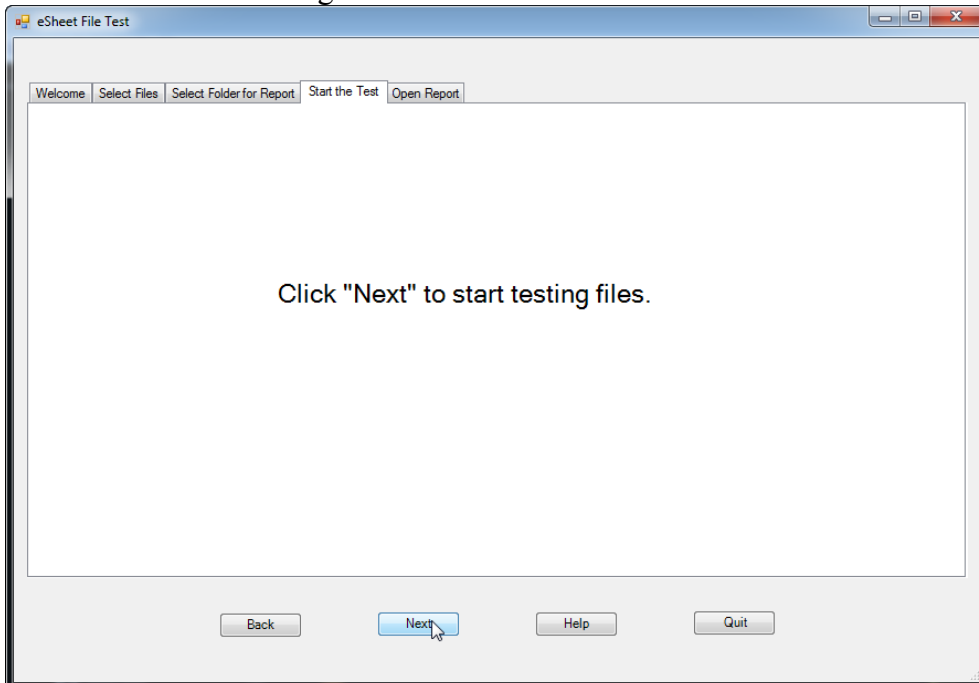
7. Click OK or Make New Folder to create a folder for the report.



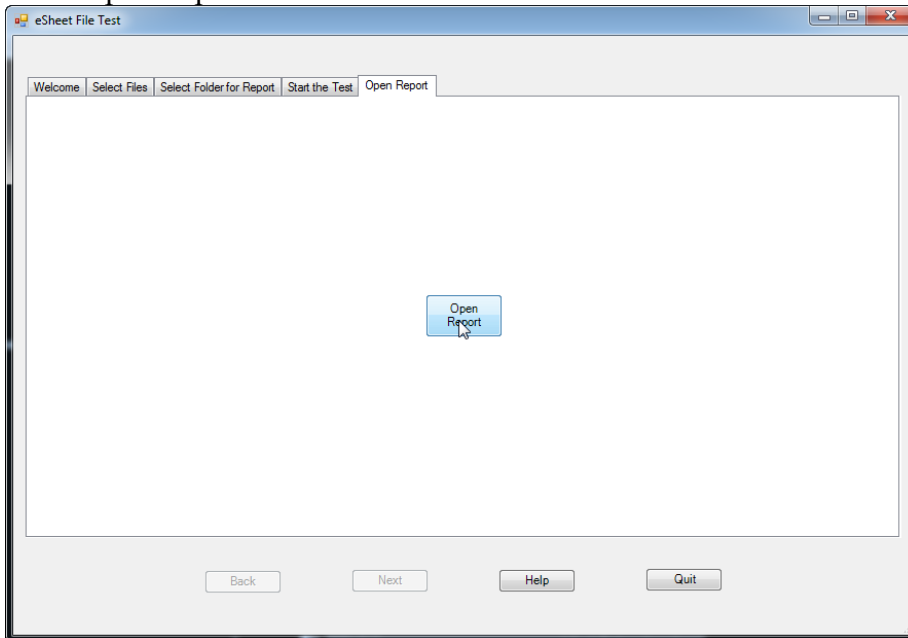
8. Click Next.



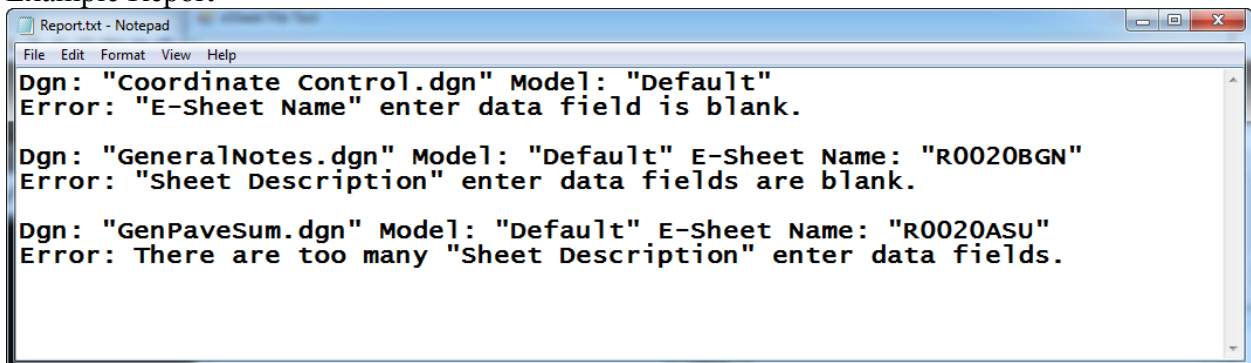
9. Click Next to start testing the files.



10. Click Open Report.



Example Report



The first line tells you the design file name, the model name, and the eSheet name (if available.) where the error is and the second line tells you what the problem might be.

If you need support for this app or are stuck on how to fix an error, please contact KYTCCaddSupport@ky.gov.

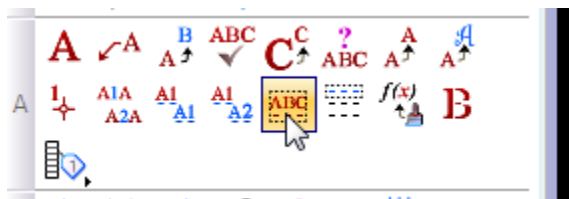
Design file repair instructions

Error:

Dgn: "Coordinate Control.dgn" Model: "Default"
Error: "E-Sheet Name" enter-data field is blank.

Resolution:

Take a look at the E-SHEET NAME. The blue enter-data field needs the sheet name. Use the Fill In Single Enter-Data Field tool to type in the name. Be sure you use numeric zero instead of the alphabetic character "O."



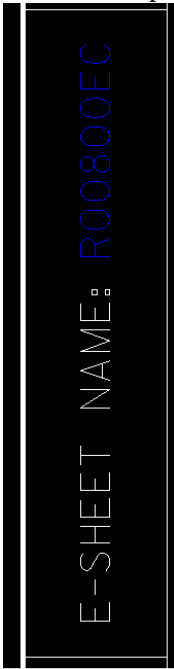
Error:

Dgn: "Erosion Control 2d.dgn" Model: "Default"
Error: No enter-data field for "E-Sheet Name."

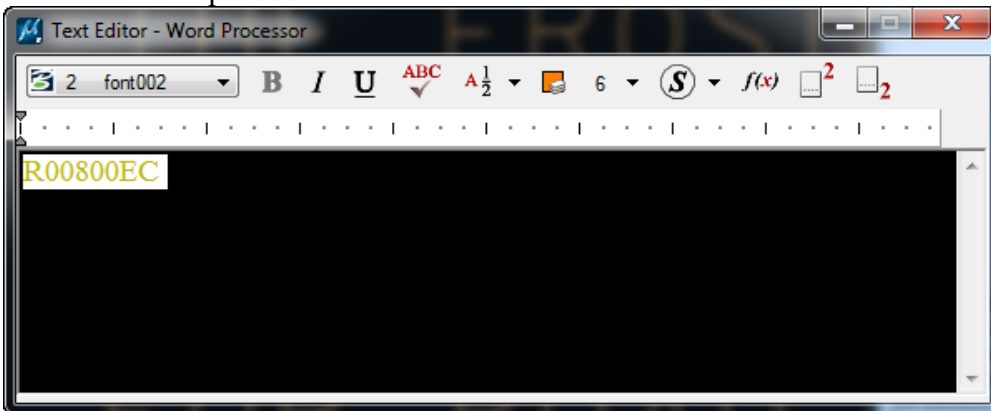
Resolution:

The Edit Text tool was probably used to fill in the E-Sheet Name which removed the enter-data field. This can be fixed with the following steps.

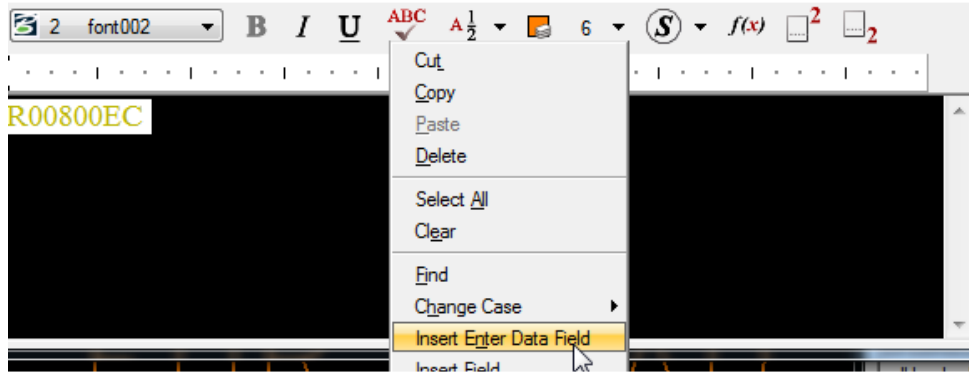
1. Here is the problem. Notice the text does not have the enter-data field lines underneath.



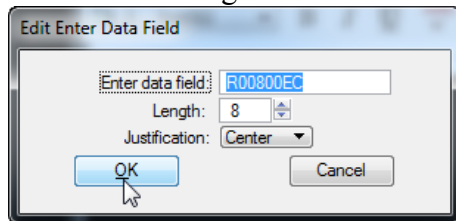
2. Click the Edit Text tool. _____ and select the eSheet name. The text will show up in the Text Editor window.



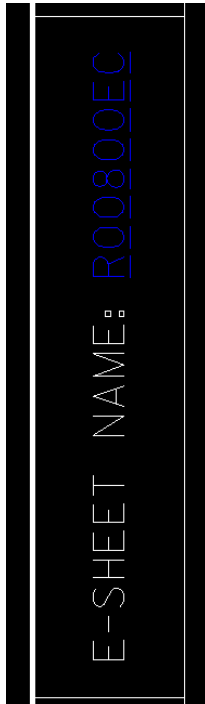
3. Right click in the Text Editor window and select Insert Enter Data Field from the pop-up menu.



4. Click the OK button on the Edit Enter Data Field dialog box. No changes need to be made in the dialog box.



5. Click a data point in the view to accept the changes.
6. Notice the enter-data field lines under the eSheet Name.



Error:

Dgn: "GeneralNotes.dgn" Model: "Default" E-Sheet Name: "R0020BGN"
Error: "Sheet Description" enter data fields are blank.

Resolution:

At least one of the Description Enter-Data Fields must have text. It can be fixed using the same method as the blank eSheet name.

Error:

Dgn: "GenPaveSum.dgn" Model: "Default" E-Sheet Name: "R0020ASU"
Error: Some or all of the "Sheet Description" enter data field are missing.

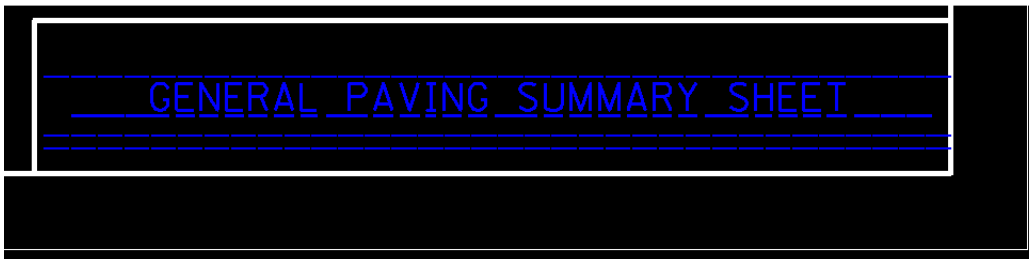
Or this error:

Dgn: "GenPaveSum.dgn" Model: "Default" E-Sheet Name: "R0020ASU"
Error: There are too many "Sheet Description" enter data fields.

Resolution:

There should be three Enter-Data Fields in the Sheet Description area. Here is how to fix these problems.

1. Take a look at the Sheet Description area. In the example below there are four Enter-Data Fields.



2. Drop the sheet cell.
3. Delete the extra Enter-Data Field.
4. Use the UndropSheetCell app to repair the sheet cell.

It is a little trickier when there are too few Enter-Data Fields but the process is basically the same. Instead of deleting the extra Enter-Data Field, you need to copy one of them.

The layout sheet cell does not have these three enter-data fields and will cause this error. The error can be ignored on a layout sheet design file.

Error:

Dgn: "PROFILE.dgn" Model: "Default"

Warning: Does not contain a sheet cell or the sheet cell has been dropped.

Resolution:

The sheet cell has probably been dropped or there are models in the design file that do not have sheet cells. If you have a model with a sheet cell and one or more models without sheet cells (i.e. Geo. Tech. design file), you can ignore this error. If the sheet cell has been dropped, it can be fixed by running the UndropSheetCell app.

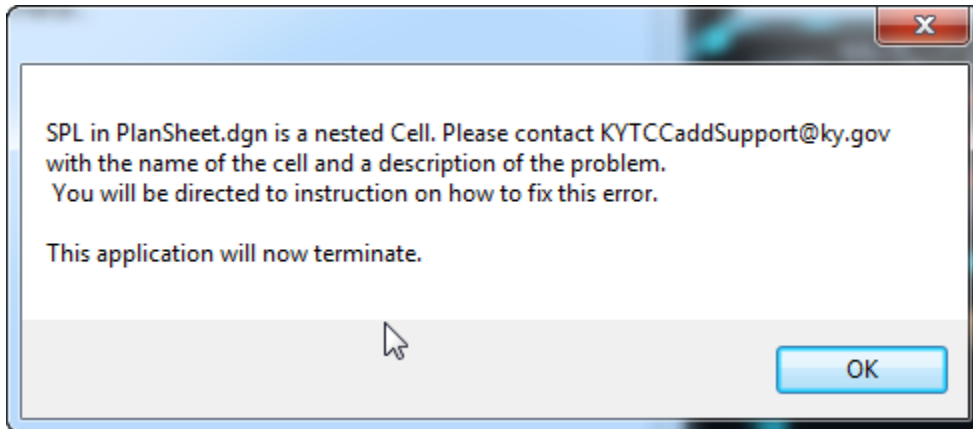
Error:

Dgn: "R00200TS.dgn" Model: "Default"
Error: Has 1 or more raster file attachments.

Resolution:

Remove all raster file attachments with the exception of the Layout Sheet. The Layout Sheet can have one raster file attached as the map. At this time, the eSheetFileTest app cannot distinguish a layout sheet design file from any other design file. Therefore, a layout sheet will cause this error and can be ignored.

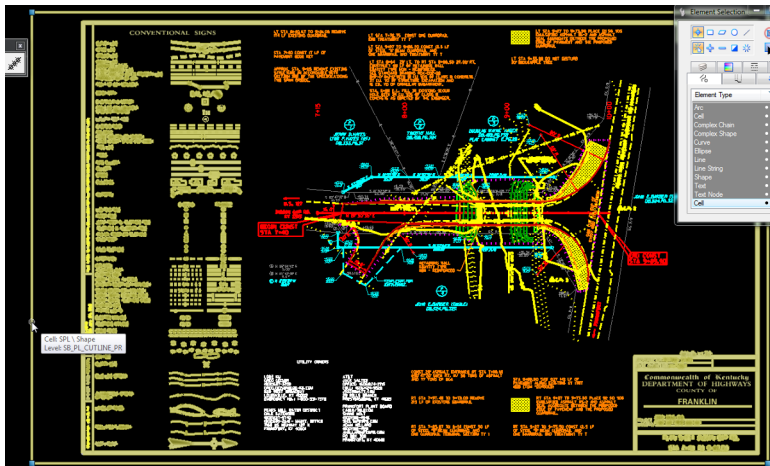
Error:



Resolution:

Please send an email to KYTCCaddSupport@ky.gov with the name of the cell and stating that it has a nested cell. We need this information to fix the cell library. To fix this for your project, follow these steps.

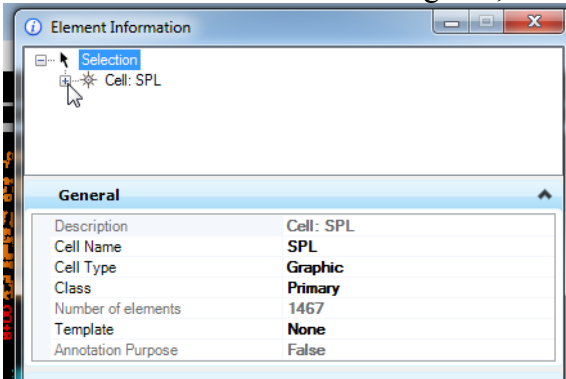
1. Use the Element Selection tool to select the sheet cell.



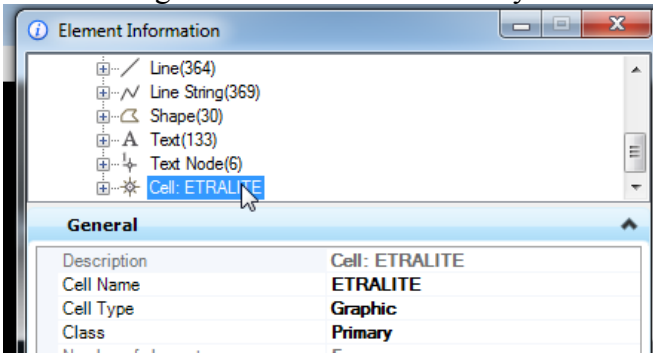
2. Click on Element Information.



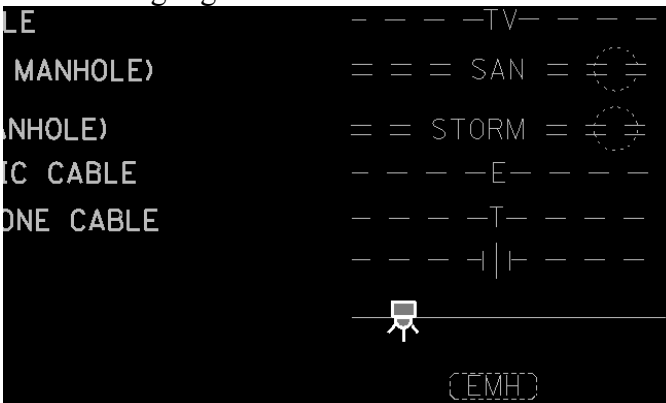
- In the Element Information dialog box, click the “+” next to the sheet cell name.



- Scroll through the list of elements until you find a Cell, and click on the cell.



- This will highlight the nested cell as shown below.



- Now that you know where the nested cell is, drop the sheet cell.
- Now drop the nested cell.
- Then use the UndropSheetCell app to restore the sheet cell.